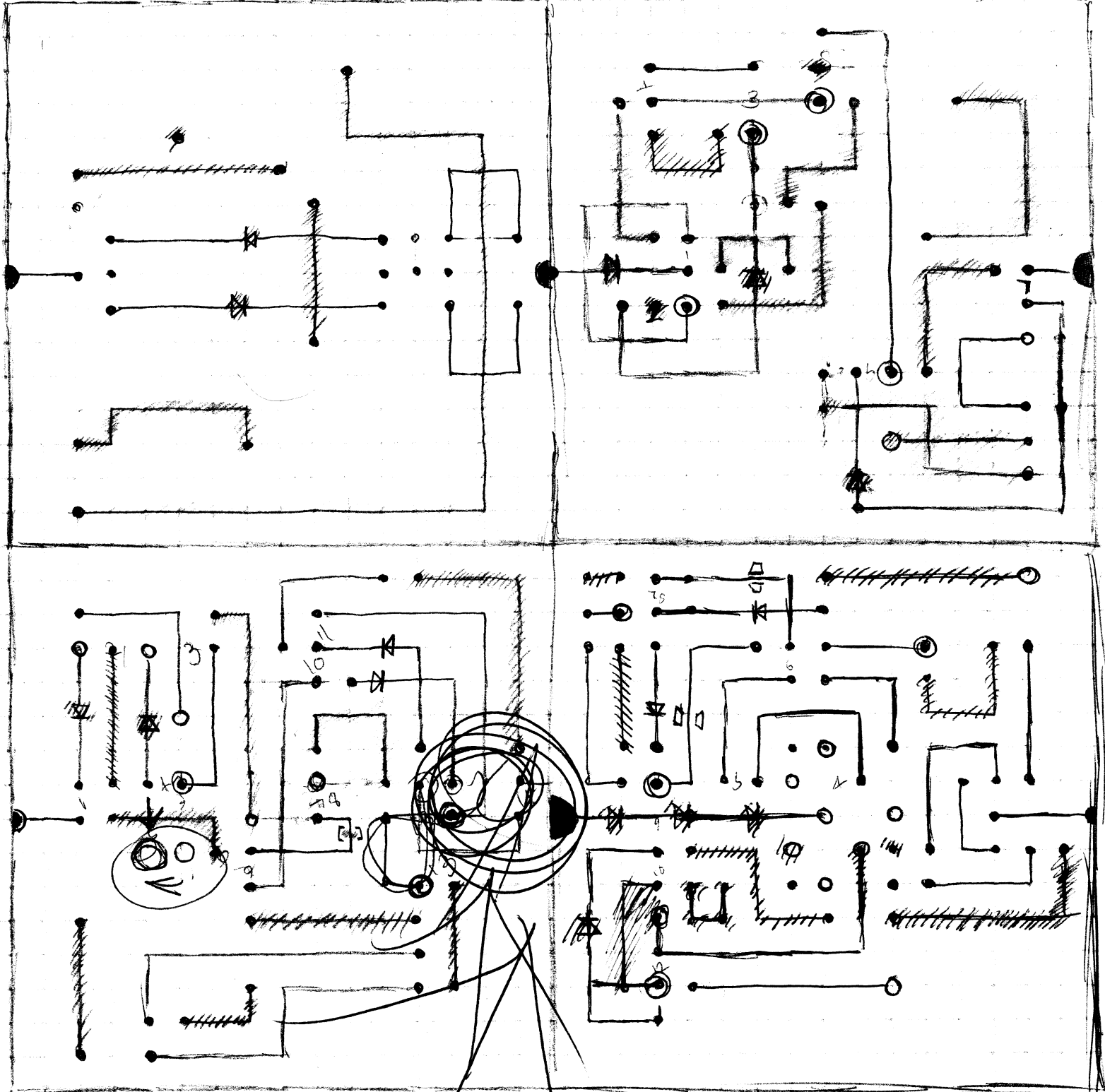


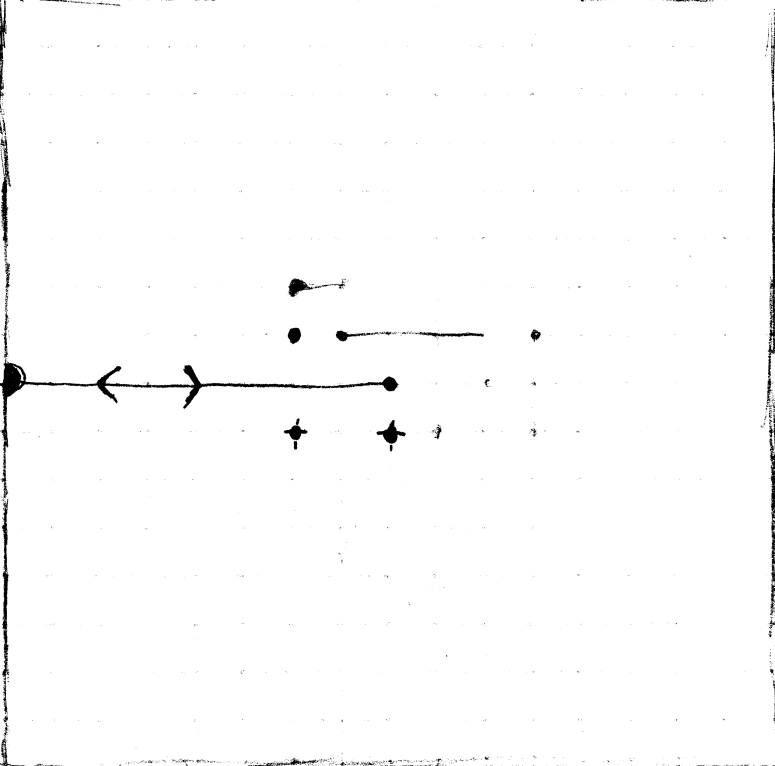
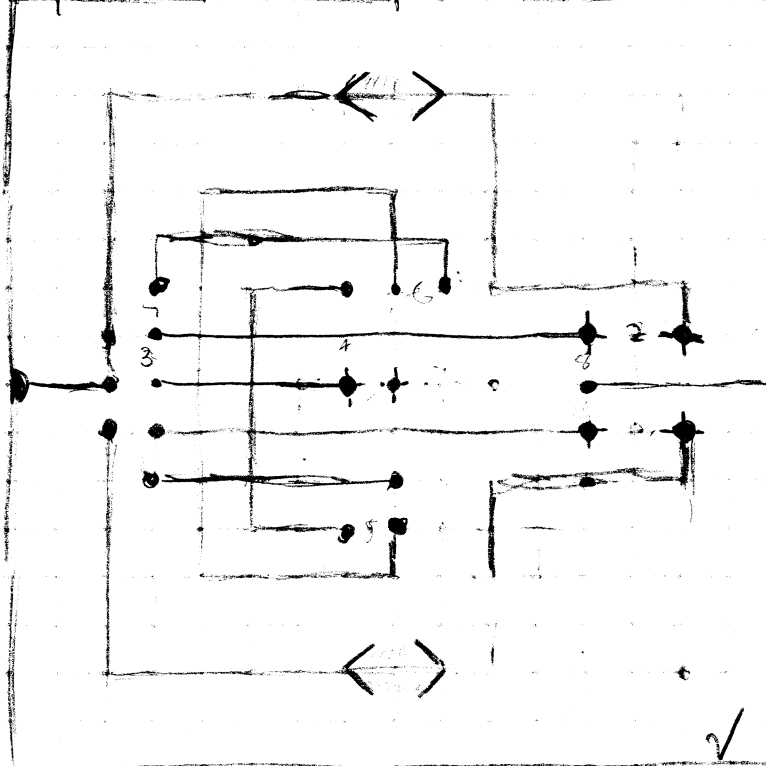
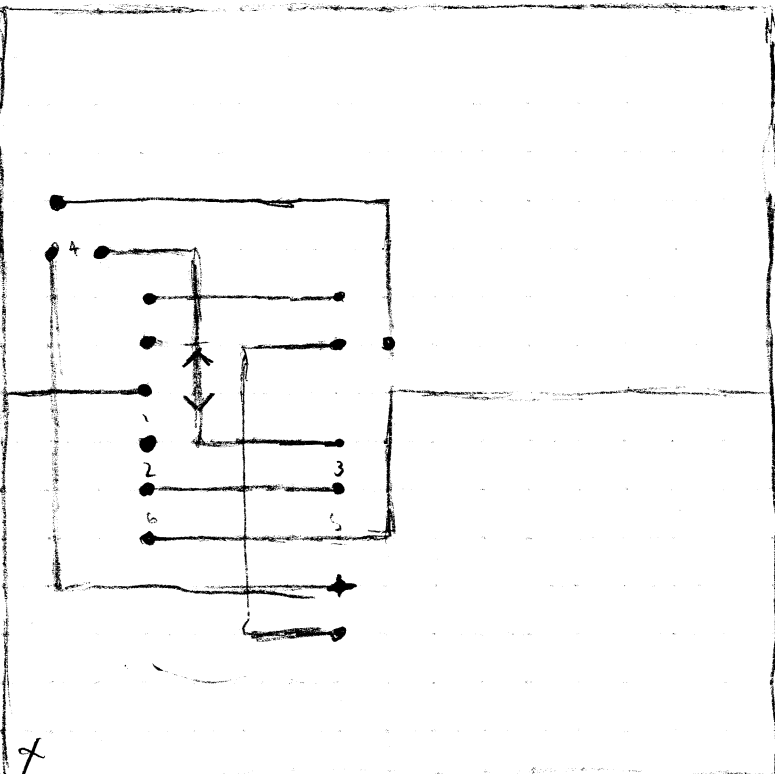
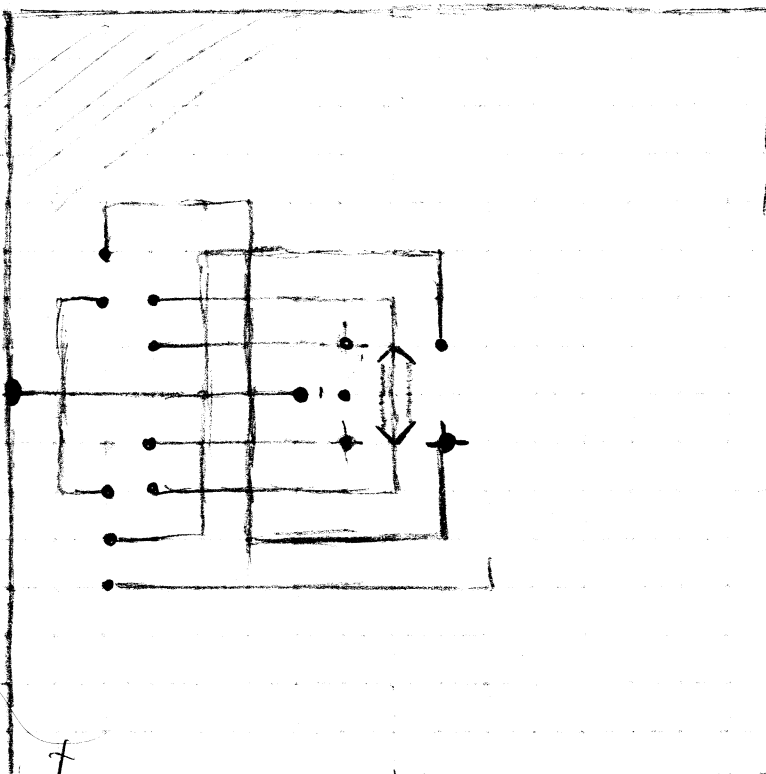
Notes while creating,

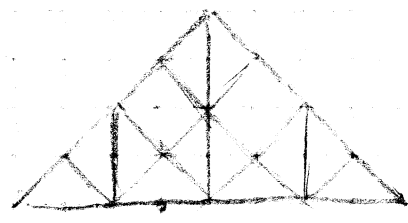
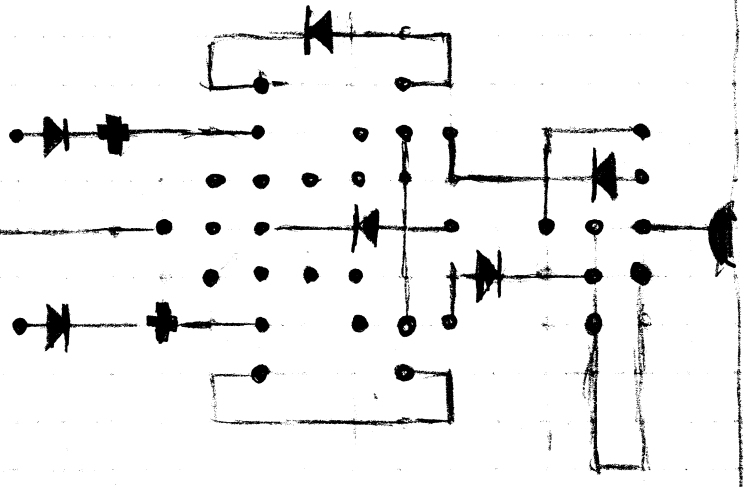
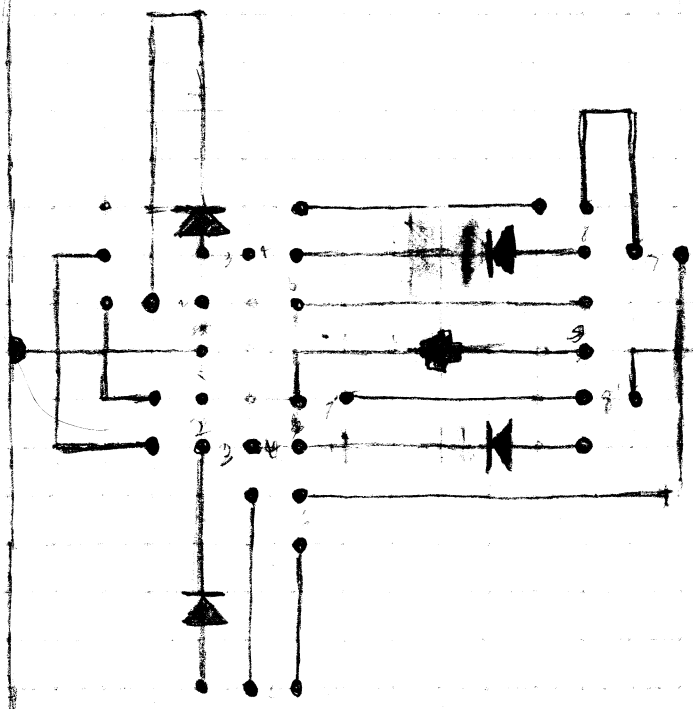
- New Super charger spike. backwards feed back.
- camera shift after jumps.
- camera logic (shift to position after jumps).
- quick recommendation (use the center of the sub level

sub intro and other
change movement.
low stress.



D. 4 decoder type





$\sqrt{3}/2$ $\sqrt{2}/2$ $1/2$
 (D0)
 (-1)

~~Object~~ Objecto el D leg

7π 5π $3\pi = \textcircled{7\pi}$

$\cos(\pi) = \cos(7\pi)$

